



SOLARTRON
Public Company Limited

**Multi-Crystalline Silicon
Solar Module
210 Watt
SP200E**



The solar modules SP200E series by Solartron are superior quality and high performance solar modules designed for use in a wide variety of applications. The innovatively-designed modules are manufactured from automated production lines under consistently high production quality conditions.

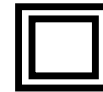
The highly efficient multi-crystalline silicon solar cells are encapsulated in a thick tempered glass cover, transparent EVA (ethylene vinyl acetate) sheets and high quality back sheet to provide efficient protection from the severest of environmental conditions. The entire laminate is installed in anodized aluminum frames to provide structural strength and ease of installation. The solar modules are also equipped with a junction box which is IP65 protection rated making electrical connections in the field more convenient. Bypass diodes are also included to minimize the power drop caused by shade.

Standards and Certificates:

- ISO 9001:2008
- ISO 14001:2004
- TIS 18001:1999, OHSAS 18001:2007
- TLS 8001-2003
- TUV IEC 61215:2005(2nd Ed.)
- TUV IEC 61730-2:2004
- TIS. 1843-2542
- CE Mark (EMC-Directive 2004/108/EC)
- RoHS

Dimensions

Length	152.0 cm
Width	99.5 cm
Height	4.6 cm
Weight	21.0 kg



SOLARTRON PUBLIC COMPANY LIMITED

1000/65, 66, 67 P.B. Tower 16th Floor,
Sukhumvit 71 Road, North Khlongton, Wattana,
Bangkok 10110, Thailand.

Tel : +66 2 392 0224 (Auto 10 Lines),

Fax : +66 2 381 0936 , +66 2 381 2971

E-mail : support@solartron.co.th www.solartron.co.th

SOLARTRON TECHNOLOGY CENTER

88/8 Moo 10, Nongnamdang, Pakchong,
Nakonratchasima 30130, Thailand.

Tel : +66 44 365 651, +66 44 365 652

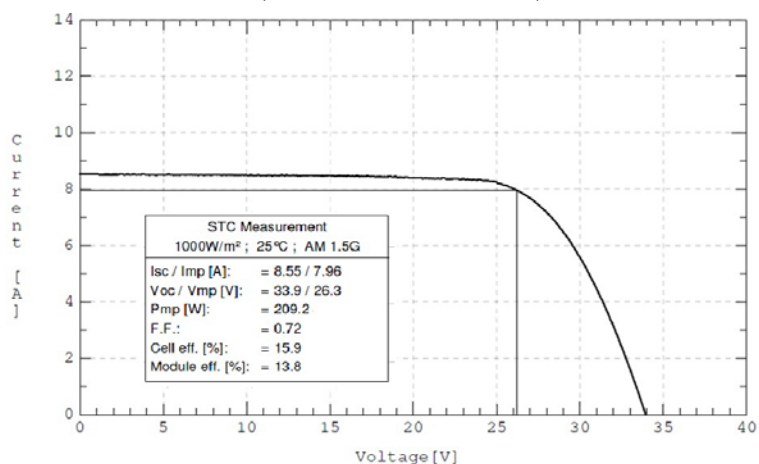
Fax : +66 44 365 654



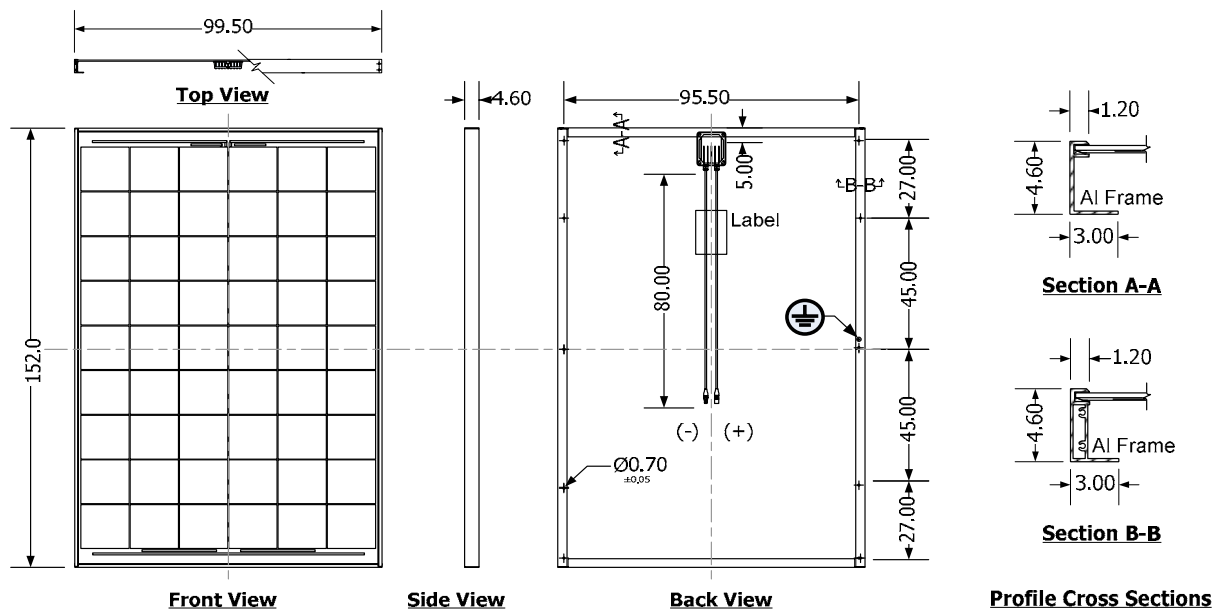
Model		SP200E
Performance Under Standard Test Conditions (STC) *		
Norminal Power	W	210
Tolerance of Maximum Power	%	+5/-5
Maximum Power Voltage (Vmp)	V	26.50
Maximum Power Current (Imp)	A	7.96
Open Circuit Voltage (Voc)	V	34.00
Short Circuit Current (Isc)	A	8.42
System Design Characteristics		
Maximum System Voltage	V	1,000
Limiting Reversing Current	A	12
Main Materials		
Cells per Module	piece	54
Cell Dimensions	cm	15.6x15.6
Front Glass Thickness	cm	0.32
Encapsulant		EVA
Back Sheet		PVF/PET/PVF
Junction Box		IP65
Bypass Diodes	piece	3
Connector Type		MC 4

*Note: The electrical specifications are under Standard Test Conditions (STC) of Irradiance of 1,000 W/m², Spectrum 1.5 Air Mass and Module Temp. of 25 °C.

Dimensions	
Length	152.0 cm
Width	99.5 cm
Height	4.6 cm
Weight	21.0 kg
Frame	Anodized Aluminum



Drawings



Unit of Dimensions : cm

Solartron reserves the right to make specification changes without prior notice. For detailed information on these products, please consider the installation manuals.